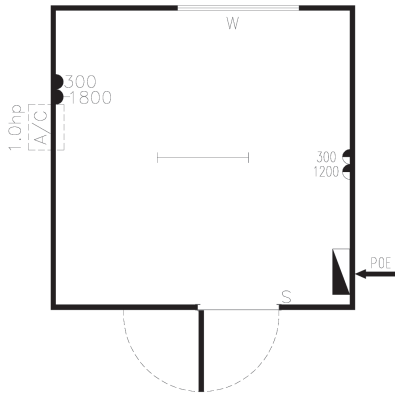
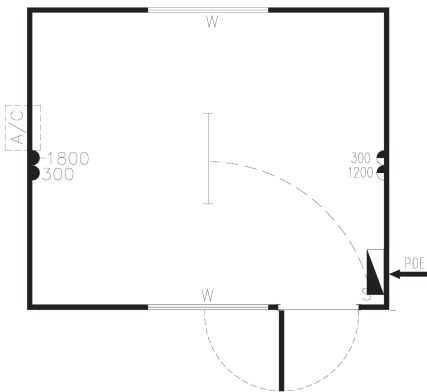


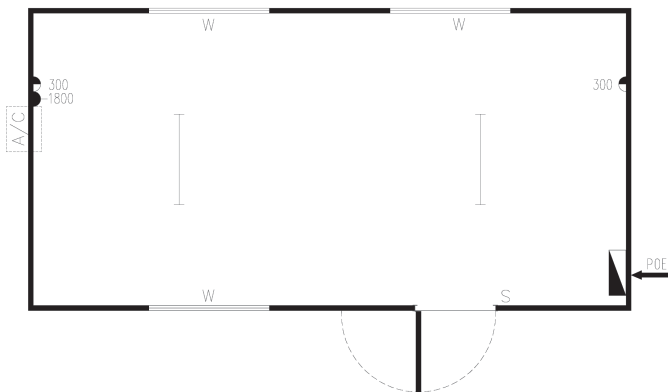
OS-001 office shell 3.0 x 3.0m



OS-002 office shell 3.6 x 3.0m



OS-003 office shell 6.0 x 3.0m



Please contact **AMS** if you would like more information about our Mining, Resources and Construction Building Range.



AMS specialise in the use of a number of products and construction techniques for the mining and resource sectors e.g. Concrete or steel floors, steel, panel and/or composite wall systems. We can provide all necessary designs, manufacture, transport and installation services to meet your industry or remote area construction requirements.

Floor plans and elevations are for illustration purposes only.

ABN 28 106 655 458 Builder Reg No: 12568

AUSSIE MODULAR SOLUTIONS

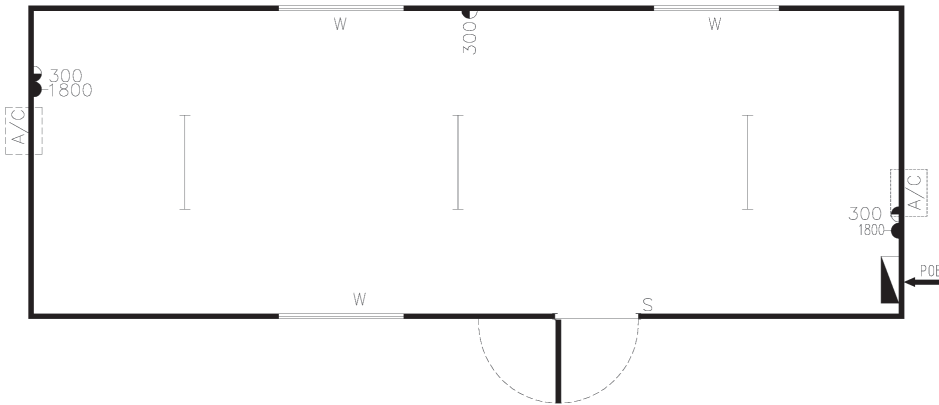
T +61 8 9356 1086

F +61 8 9358 5481

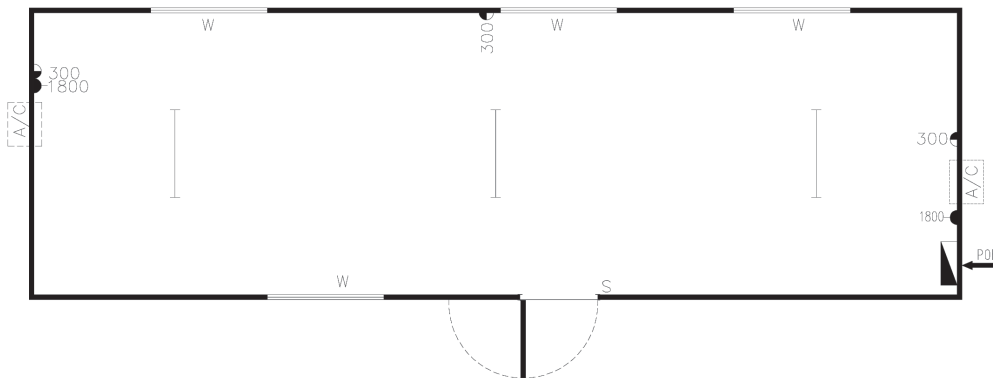
sales@ams-group.com.au

www.ams-group.com.au

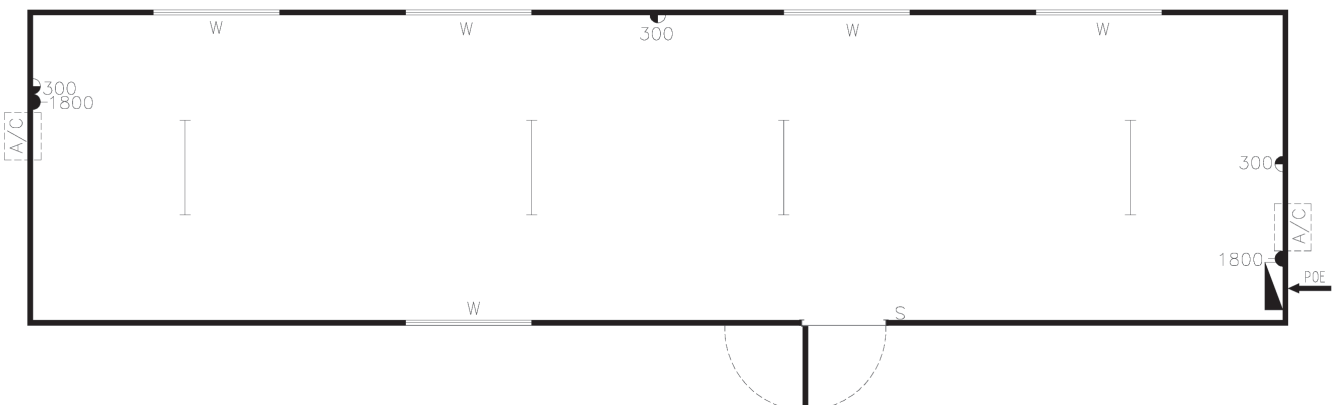
OS-004 office shell 8.4 x 3.0m



OS-005 office shell 9.6 x 3.0m



OS-006 office shell 12.0 x 3.0m



Please contact **AMS** if you would like more information about our Mining, Resources and Construction Building Range.



AMS specialise in the use of a number of products and construction techniques for the mining and resource sectors e.g. Concrete or steel floors, steel, panel and/or composite wall systems. We can provide all necessary designs, manufacture, transport and installation services to meet your industry or remote area construction requirements.

Floor plans and elevations are for illustration purposes only.

ABN 28 106 655 458 Builder Reg No: 12568

AUSSIE MODULAR SOLUTIONS

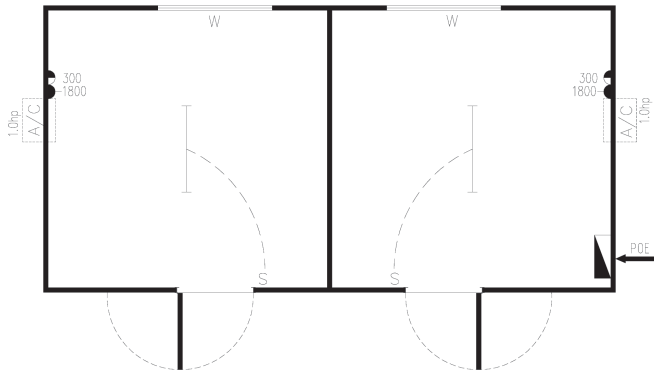
T +61 8 9356 1086

F +61 8 9358 5481

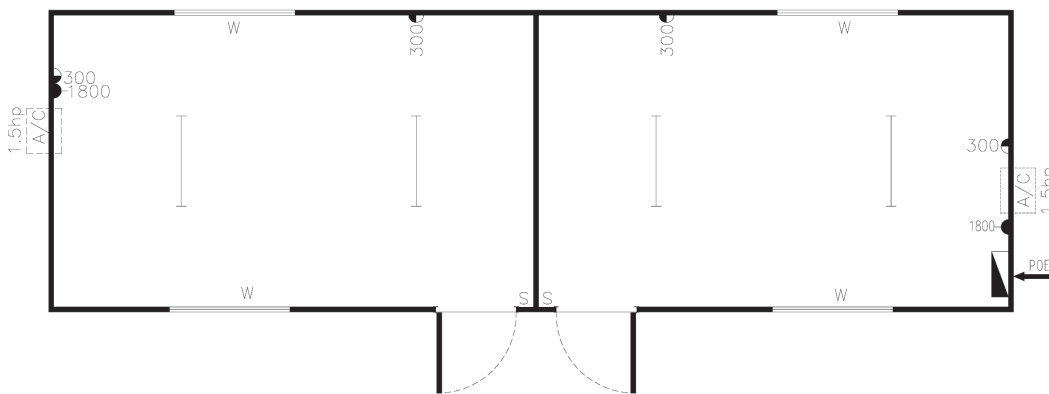
sales@ams-group.com.au

www.ams-group.com.au

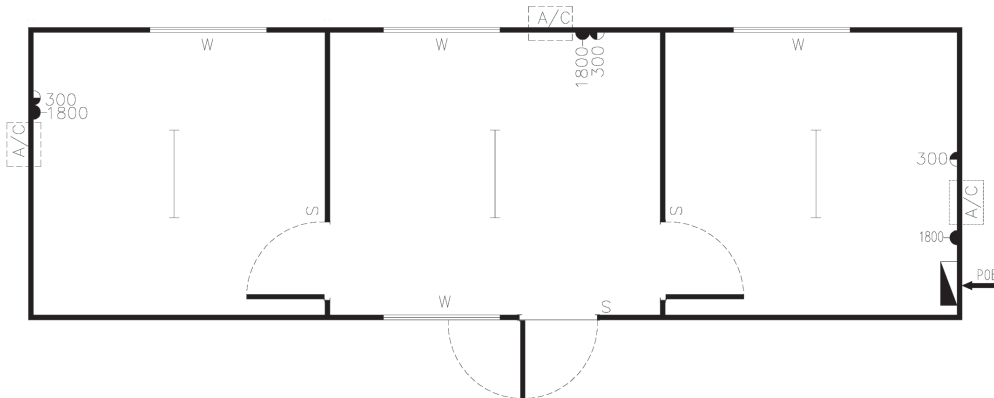
MRO-001 2 room office 6.0 x 3.0m



MRO-002 2 room office 9.6 x 3.0m



MRO-003 3 room office 9.6 x 3.0m



Please contact **AMS** if you would like more information about our Mining, Resources and Construction Building Range.



AMS specialise in the use of a number of products and construction techniques for the mining and resource sectors e.g. Concrete or steel floors, steel, panel and/or composite wall systems. We can provide all necessary designs, manufacture, transport and installation services to meet your industry or remote area construction requirements.

Floor plans and elevations are for illustration purposes only.

ABN 28 106 655 458 Builder Reg No: 12568



AUSSIE MODULAR SOLUTIONS

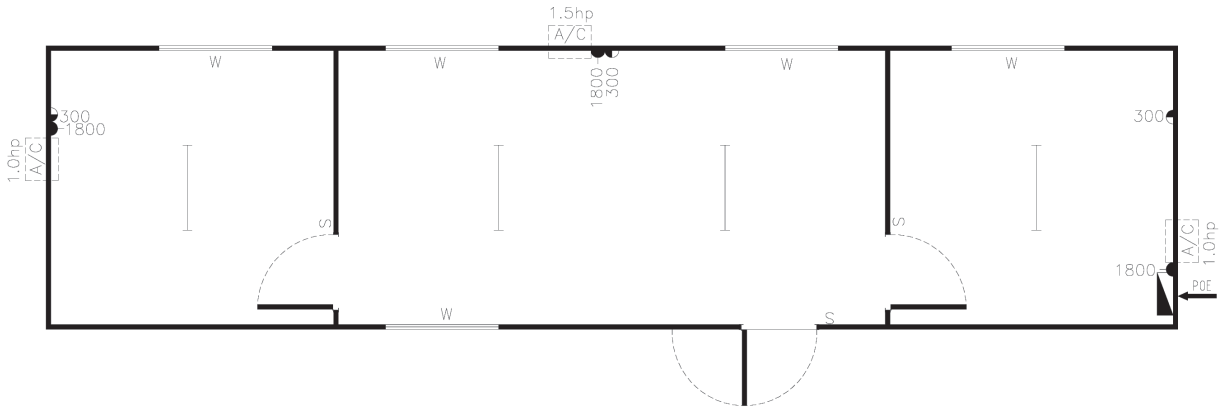
T +61 8 9356 1086

F +61 8 9358 5481

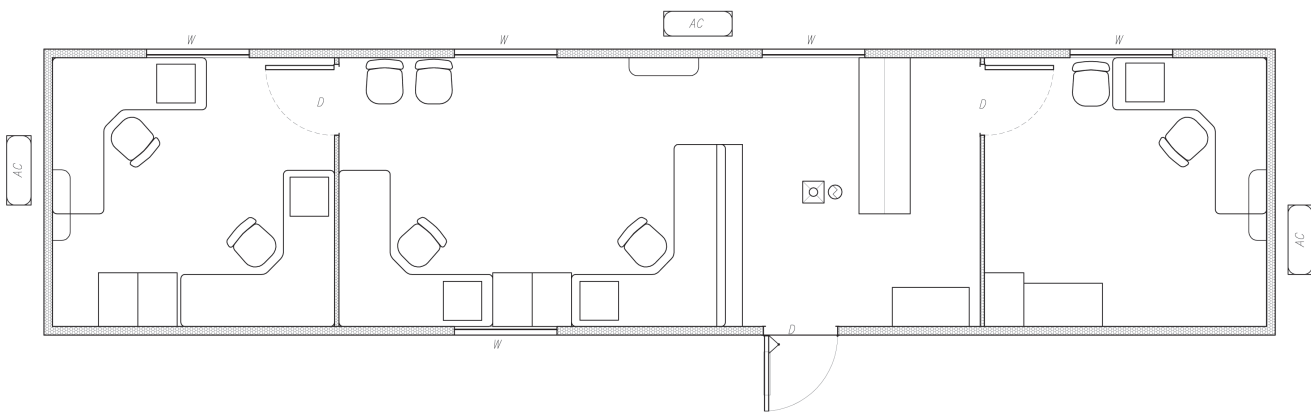
sales@ams-group.com.au

www.ams-group.com.au

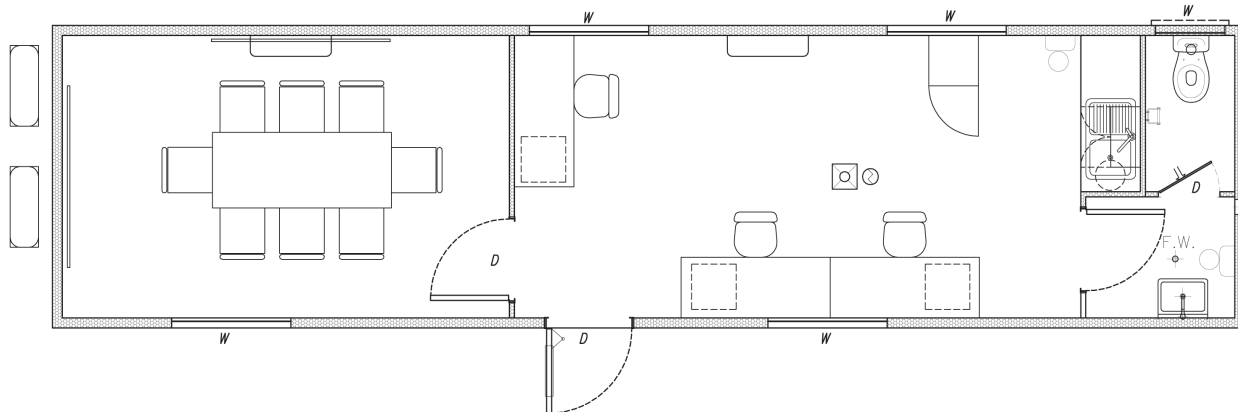
MRO-004 3 room office 12.0 x 3.0m



MRO-005 3 room office 14.4 x 3.3m



MRO-006 office / crib 12.0 x 3.0m



Please contact **AMS** if you would like more information about our Mining, Resources and Construction Building Range.



AMS specialise in the use of a number of products and construction techniques for the mining and resource sectors e.g. Concrete or steel floors, steel, panel and/or composite wall systems. We can provide all necessary designs, manufacture, transport and installation services to meet your industry or remote area construction requirements.

Floor plans and elevations are for illustration purposes only.

ABN 28 106 655 458 Builder Reg No: 12568

AUSSIE MODULAR SOLUTIONS

T +61 8 9356 1086

F +61 8 9358 5481

sales@ams-group.com.au

www.ams-group.com.au